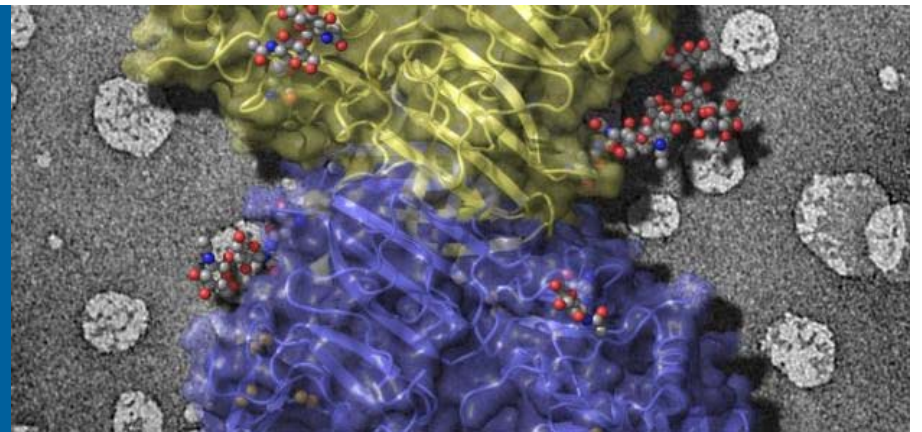


WWW.ANL.GOV



# STRATEGIC PLANS AND FUTURE VISIONS

## BERAC SPRING 2016



**RICK STEVENS**

Associate Laboratory Director  
Computing, Environment and Life Science

March 22, 2016

# ARGONNE MISSION AND OVERVIEW

Creating new knowledge addressing the scientific and societal needs of our nation and the world

Founded in 1943

Managed by The University of Chicago

3,450 employees

5,200+ scientists/yr use 6 National User Facilities

\$750M annual budget

1,500-acre, wooded site in DuPage County, Illinois,  
25 miles southwest of Chicago

Photon Sciences  
Materials and Chemistry

Energy and  
Transportation

Fundamental Science  
Math and Computing

# CORE CAPABILITIES: RESEARCH & FACILITIES

Current BER-related core research capabilities and facilities

Climate Change and Atmospheric Science

Southern Great Plains ARM Site

Structural Biology

Biological and Bioprocess Engineering

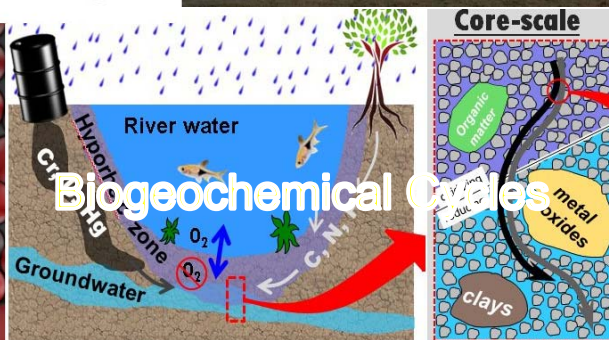
Advanced Protein  
Characterization Facility

Computational Science

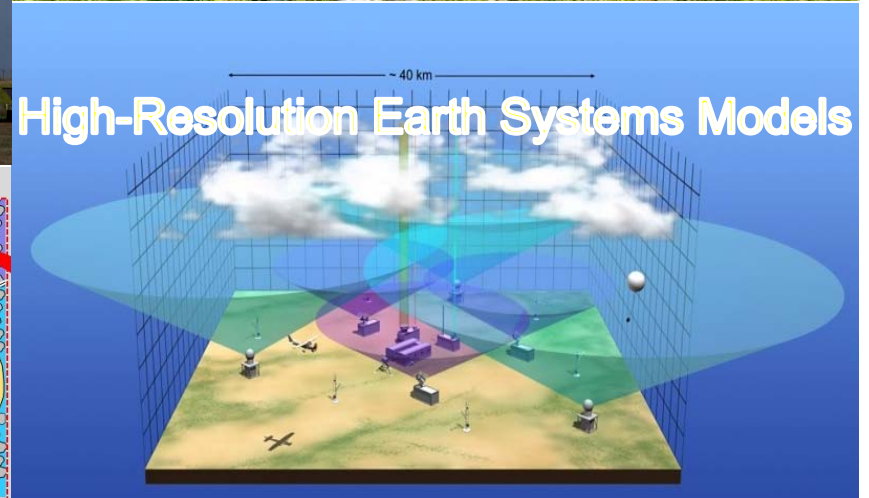
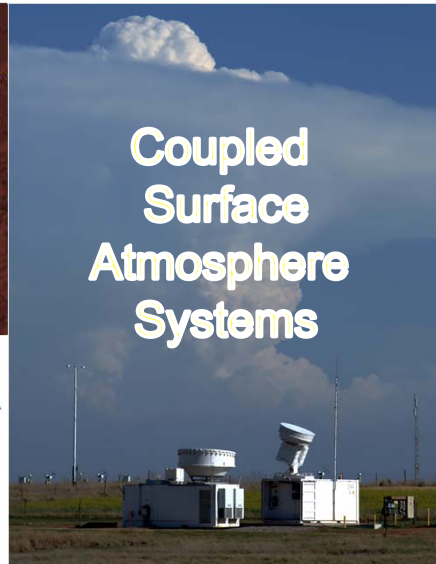
MIRA

# STRATEGIC SCIENCE PRIORITIES FOR THE FUTURE

## Biosciences



## Climate & Environmental Systems



# STRATEGIC PARTNERSHIPS FOR THE FUTURE

## Biosciences



THE UNIVERSITY OF  
**CHICAGO**



NORTHWESTERN  
UNIVERSITY



Pacific Northwest  
NATIONAL LABORATORY



Biological  
Discovery  
in Woods Hole



## Climate & Environmental Systems



**BROOKHAVEN**  
NATIONAL LABORATORY

UNIVERSITY  
*of* ALASKA



**THANK YOU**

[www.anl.gov](http://www.anl.gov)

Argonne   
NATIONAL LABORATORY