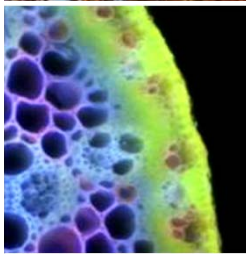


Terrestrial-Aquatic Interfaces Workshop Update

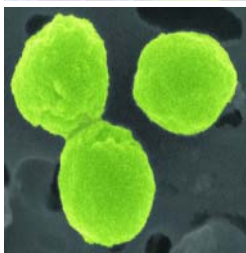
Research priorities to incorporate terrestrial-aquatic
interfaces in Earth system models

September 7-8, 2016 (Rockville, MD)



BERAC
October 27, 2016

Jared L. DeForest, Ph.D.
Daniel Stover, Ph.D.
Terrestrial Ecosystem Sciences



U.S. DEPARTMENT OF
ENERGY

Office
of Science

Office of Biological
and Environmental Research

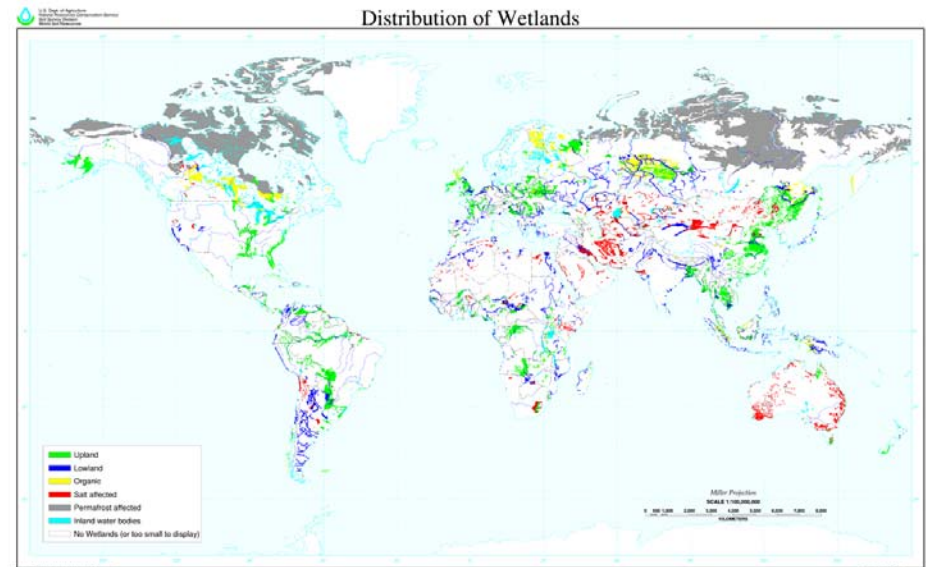
What is a Terrestrial-Aquatic Interface (TAI)?

General Description

- Highly dynamic ecosystems developed from a near balance between terrestrial and aquatic conditions forming unique processes and community assemblages.

CESD-Relevant criteria for TAI

- Carbon-rich (e.g. CO₂ & CH₄ flux)
- Globally ubiquitous
- Sensitive to climate change
- Under represented in process & Earth system models



TAI workshop, why the need?

- The unique ecosystem processes at the TAI have traditionally been excluded in Earth System Models
 - Current process level understanding of key carbon-related processes is insufficient for a reliable predictive understanding of climate change
 - Coastal areas have poor representation in ESMs, which is a critical gap
- TAI plays a critical role in biogeochemical cycling and has the potential to provide major climate forcing feedbacks
- Expected to be sensitive to shifts in moisture and disturbance regimes in response to climate change
 - Think sea-level rise, droughts, fire, etc.



Workshop Goals and Objectives

The workshop's goal was to identify critical scientific gaps that limit our ability to represent terrestrial-aquatic interfaces in predictive models.

- Specific Objectives

- Identify critical needs and gaps in CESD's biogeochemistry related modeling efforts to enhance the predictive capability of the Earth System as a whole;
- Recognize the most pressing and relevant scientific questions;
- Identify key processes, traits, existing data, and environmental characteristics;
- Prioritize research gaps to advance the workshop goal, using experimental approaches that combine with model development and analysis.



Workshop planning and process

- Workshop organizing committee



- Invited participants (40)

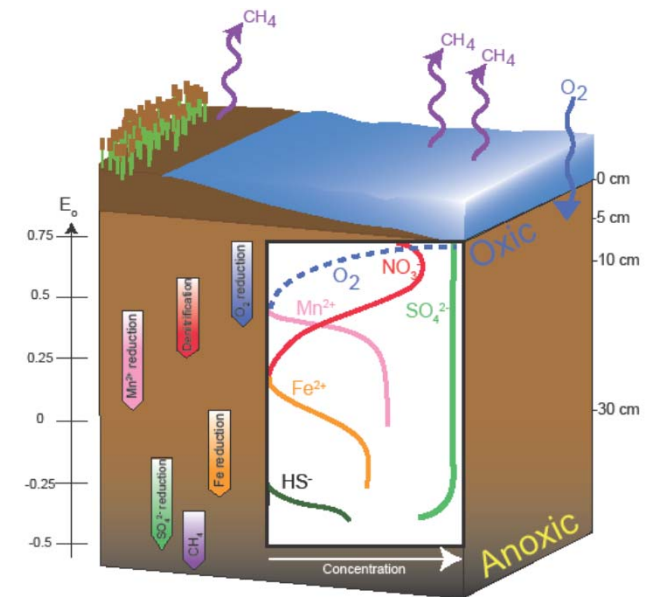
- Selected by the organizing committee with great care to represent a diversity of fields within and outside the DOE research community.
- A subgroup (10) was selected to serve on the writing team to draft the workshop report, all participants will be able to comment and provide suggestions.

- Pre-workshop participation

- An online questionnaire was utilized to gather ideas from invited participants.
- Questionnaire helped the organizing committee develop the breakout questions.

Workshop activities and initial outcomes

- Major Themes
 - Physical Processes
 - Spatial and Temporal Heterogeneity
 - Biogeochemical and Ecological Processes
 - Grand Challenges & Future Directions
- Reoccurring keywords
 - Thresholds, drivers, coupled, feedbacks, relevant spatial-temporal scales, multi-scaled models, human influences, perturbations
- Workshop report is expected to be published early 2017
 - Leads just finished sending comments to the writing team on the first order draft



Major Research Uncertainties or Questions

Initial outcomes that popped out of the breakout sessions

- Physical Processes
 - Lateral exchange, bidirectional movement of carbon/sediment into streams & exchange between coast and wetlands.
- Spatial and Temporal Heterogeneity
 - The scale (space & time) that is most relevant in characterizing the influence of perturbations or extreme disturbances on important TAI process and state changes.
 - The degree to which the fine scale processes scape up to influence large scale fluxes.
- Biogeochemical and Ecological Processes
 - Recognizing relevant microbial/plant traits that drive TAI specific processes and are sensitive to perturbations.
 - A process understanding of what generates resistance/resilience in TAI.

Major Research Uncertainties or Questions

Initial outcomes that popped out of the breakout sessions

- Better estimates on carbon pools and fluxes, but also need mechanisms and identify how generalizable they are across different TAI ecosystem.
- All TAIs are influenced by human activities, making it difficult to model socio-economic drivers that impact TAI.
- Hydrology is the master variable for understanding TAI; without that, it would be difficult to improve our predictive understanding.
- Due to the complexity of multi spatio-temporal scales, modeling resolution is most relevant to capture driving TAI processes in response to extremes?

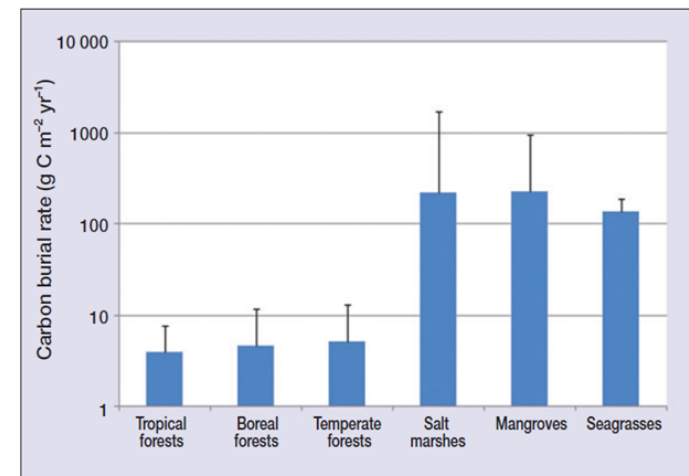


Figure 5. Mean long-term rates of C sequestration ($\text{g C m}^{-2} \text{yr}^{-1}$) in soils in terrestrial forests and sediments in vegetated coastal ecosystems. Error bars indicate maximum rates of accumulation. Note the logarithmic scale of the y axis. Data sources are included in Tables 1 and 2.

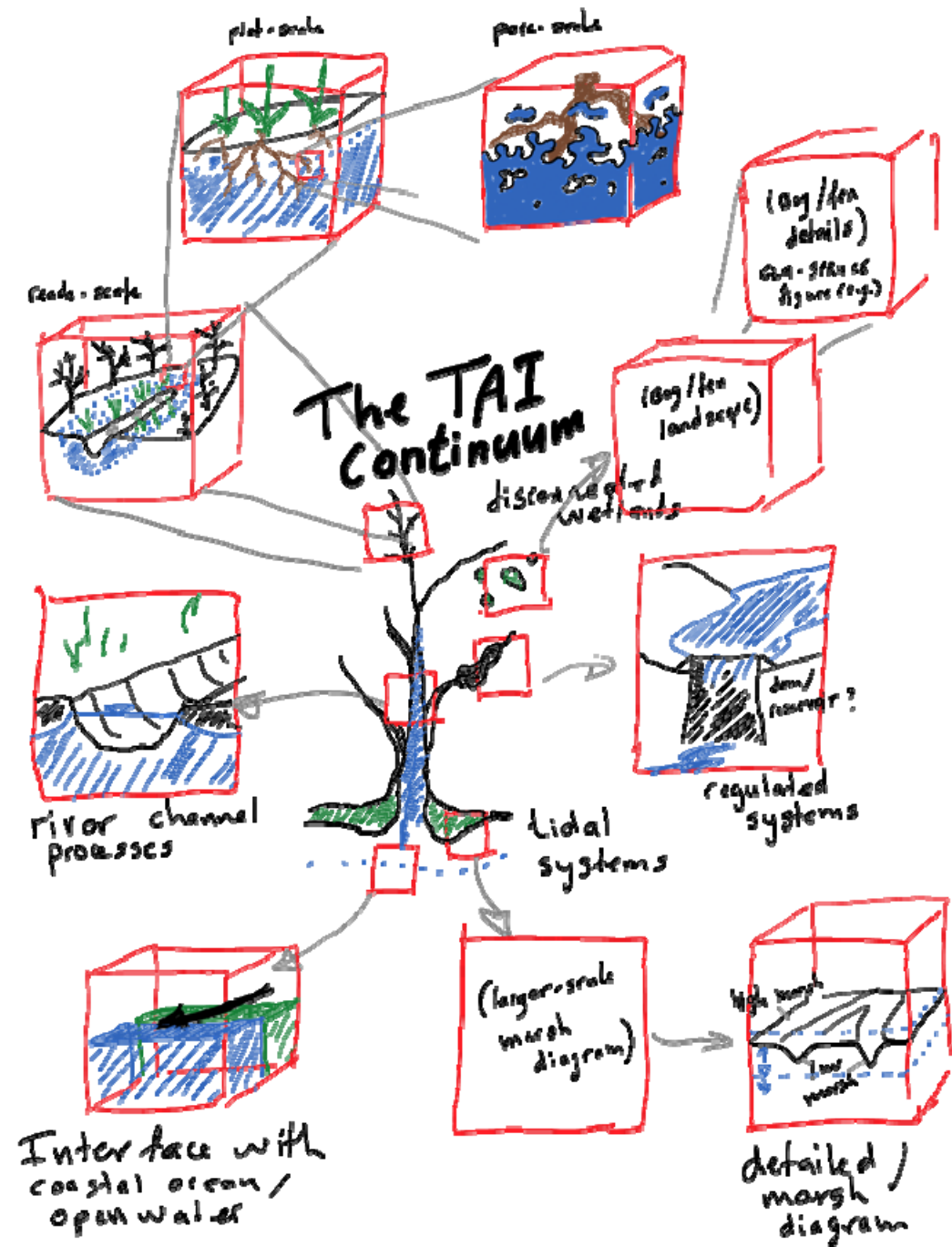
Figure from: Mcleod, E, G Chmura, S Bouillon, R Salm, M Björk, CM Duarte, CE Lovelock, WH Schlesinger, and BR Silliman. "A blueprint for blue carbon: toward an improved understanding of the role of vegetated coastal habitats in sequestering CO₂." *Frontiers in Ecology and the Environment* 9, no. 10 (2011): 552-560.

Conceptual Diagram

Drafted by Peter Thornton during the writing day

This figure illustrates the complexity and variability of the terrestrial-aquatic interface, with a focus on spatial scales and ecosystem specific process.

One challenge is how are these connected in meaningful ways?



Questions?



Terrestrial-Aquatic Interface Workshop Participants
September 7-8, 2016
Hilton Washington DC, Rockville, MD