

Office of Basic Energy Sciences

Bindu Nair, Associate Director
Andrew Schwartz, Deputy Associate Director

BES Budget and Planning
Kara Beles, Financial Management
Donetta Herbert, Financial Management
Adam Kinney, Senior Technical Advisor
(Vacant, Senior Technical Advisor)

BES Operations
Teresa Crockett, Program Analyst
Robin Hayes, Program Manager and EFRC Team Co-Lead (A)
Kerry Hochberger, Program Analyst / BESAC*
Angie Thevenot, Program Analyst
Aaron Stone, AAAS Fellow
(Vacant, Senior Technical Advisor)

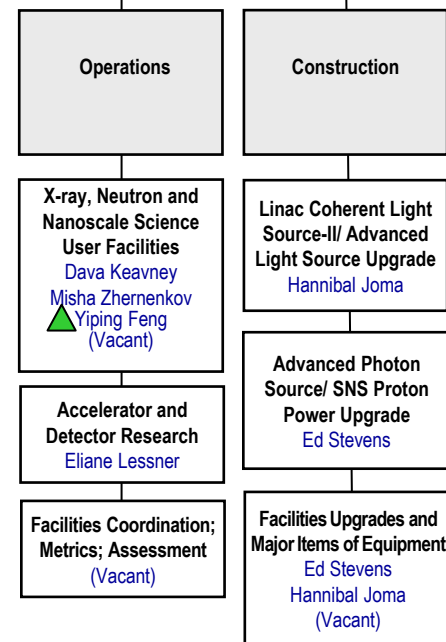
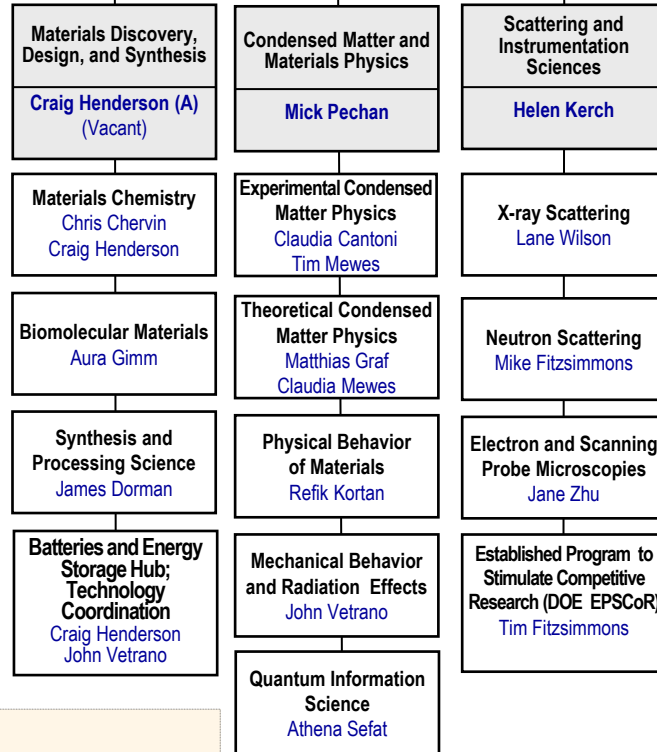
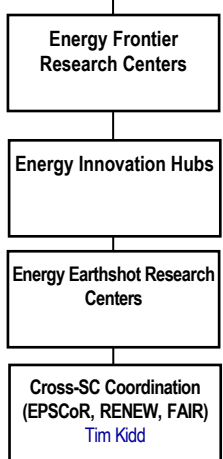
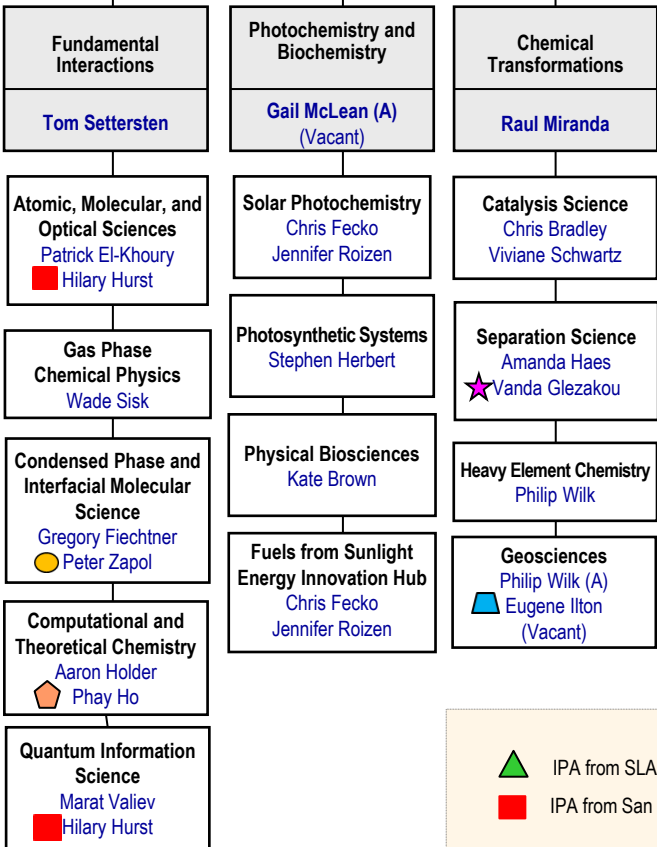
* Basic Energy Sciences Advisory Committee

Chemical Sciences, Geosciences, and Biosciences Division
Gail McLean, Director
Gregory Fiechtner, EFRC Team Co-Lead (A)
(Vacant)

Collaborative Research Division
Gail McLean, Acting Director

Materials Sciences and Engineering Division
Andrew Schwartz, Acting Director
John Vetrano, EFRC Team Co-Lead (A)
Shawn Chen

Scientific User Facilities Division
Andrew Schwartz, Acting Director
Rocio Meneses, Program Support Specialist



LEGEND

- IPA from SLAC
- IPA from San Jose State
- Detailee (50%) from ORNL
- Detailee (50%) from ANL
- Detailee (50%) from PNNL
- Detailee (50%) from ANL

(A) Acting

November 2024