



The NSF Graduate Research Fellowship Program

Dr. Gisele Muller–Parker, Program Director
gtmuller@nsf.gov



GRFP Overview

- ▶ Initiated 1952
- ▶ Identifies Nation's future STEM leaders
- ▶ Focuses on the individual
- ▶ Promotes diversity in the STEM workforce
- ▶ Adheres to the NSF Merit Review Criteria





GRFP Key Elements

Five Year Award – \$121,500

- ▶ Three years of support
 - \$30,000 Stipend per year
 - \$10,500 Educational allowance to institution
- ▶ International research opportunities
- ▶ Supercomputer access





GRFP Unique Features

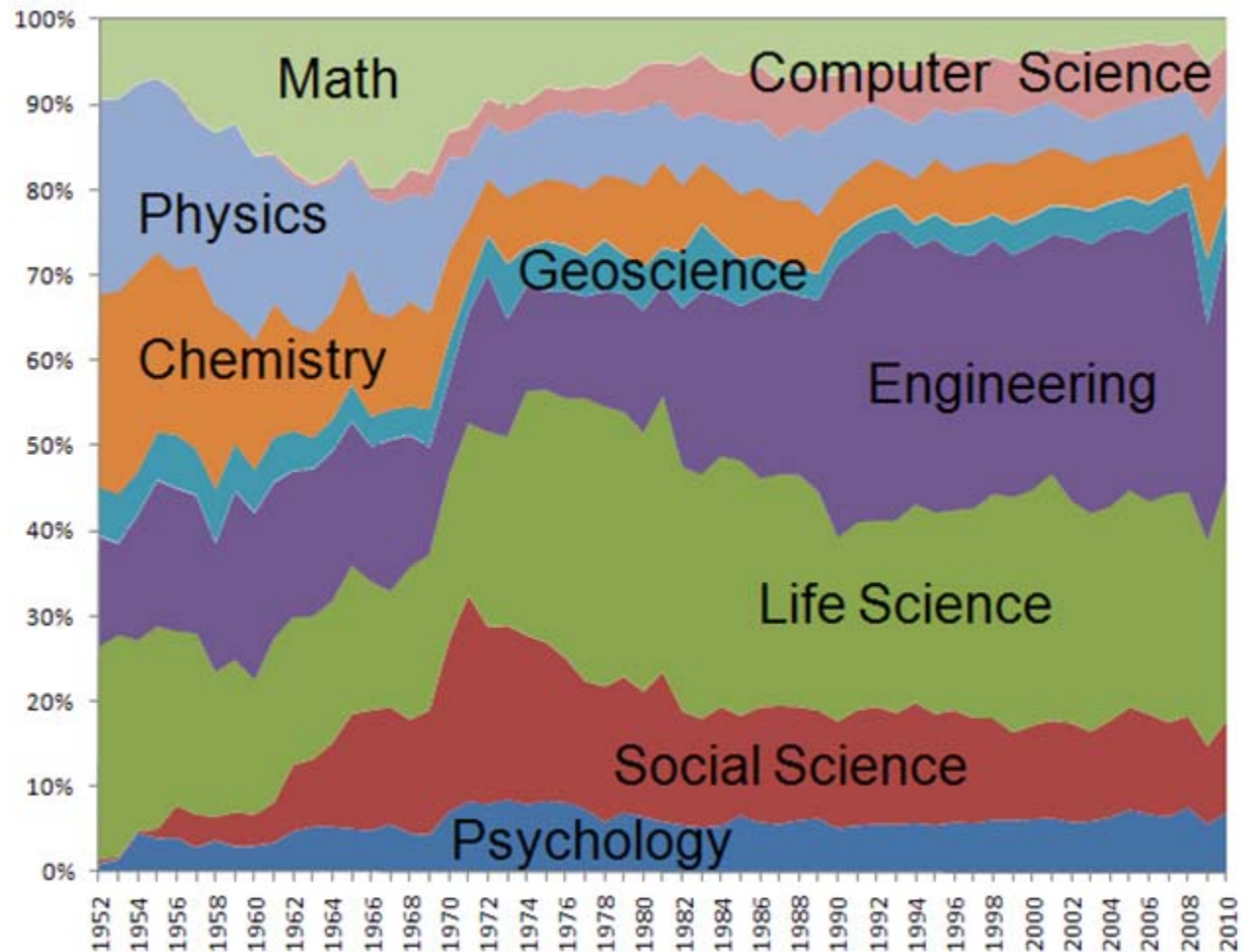
- ▶ Choice of project, research advisor & program
- ▶ No service requirement
- ▶ Portability
 - Any accredited institution
 - MS \longrightarrow PhD
- ▶ Flexibility
 - “On Reserve”
 - “On Tenure”

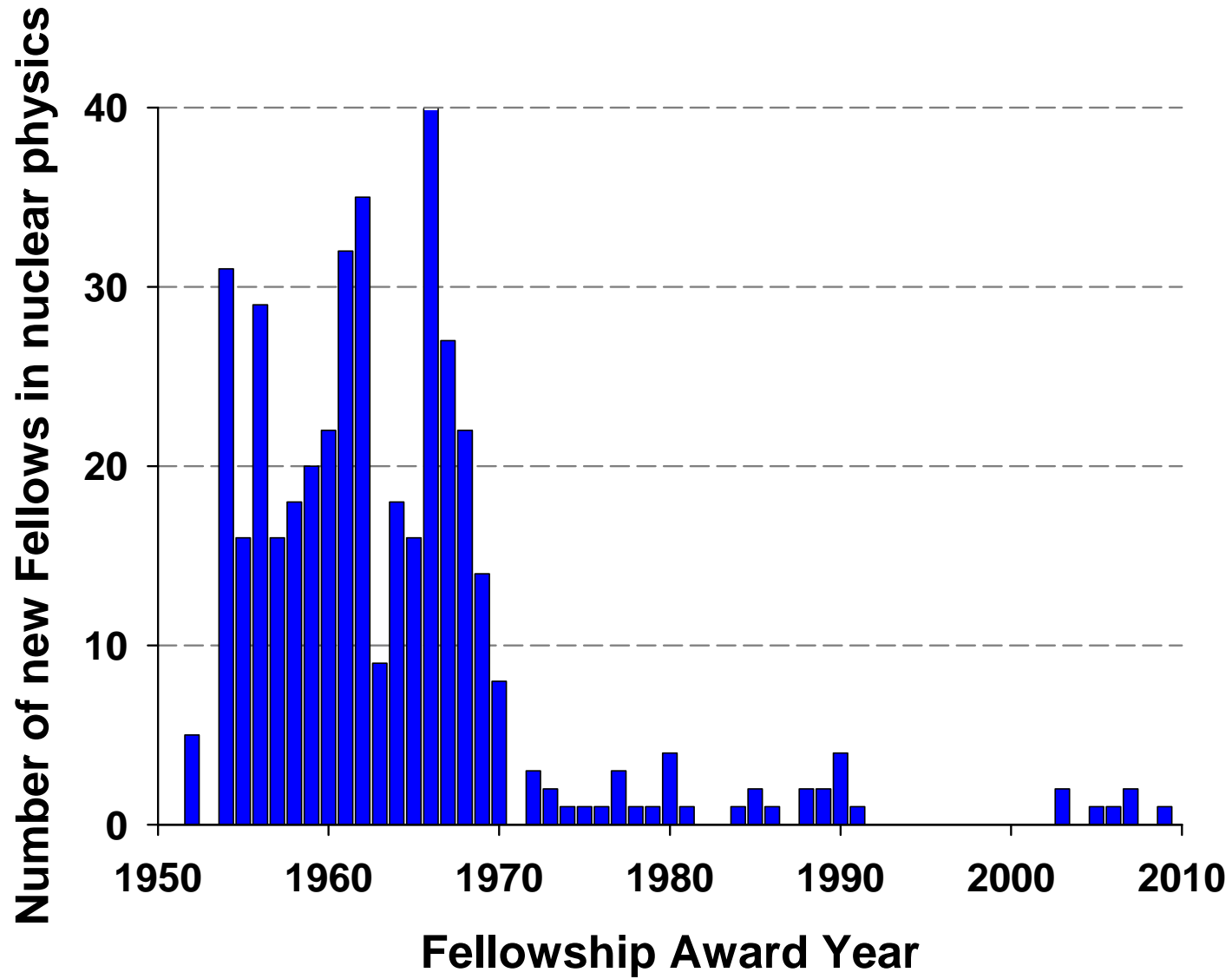




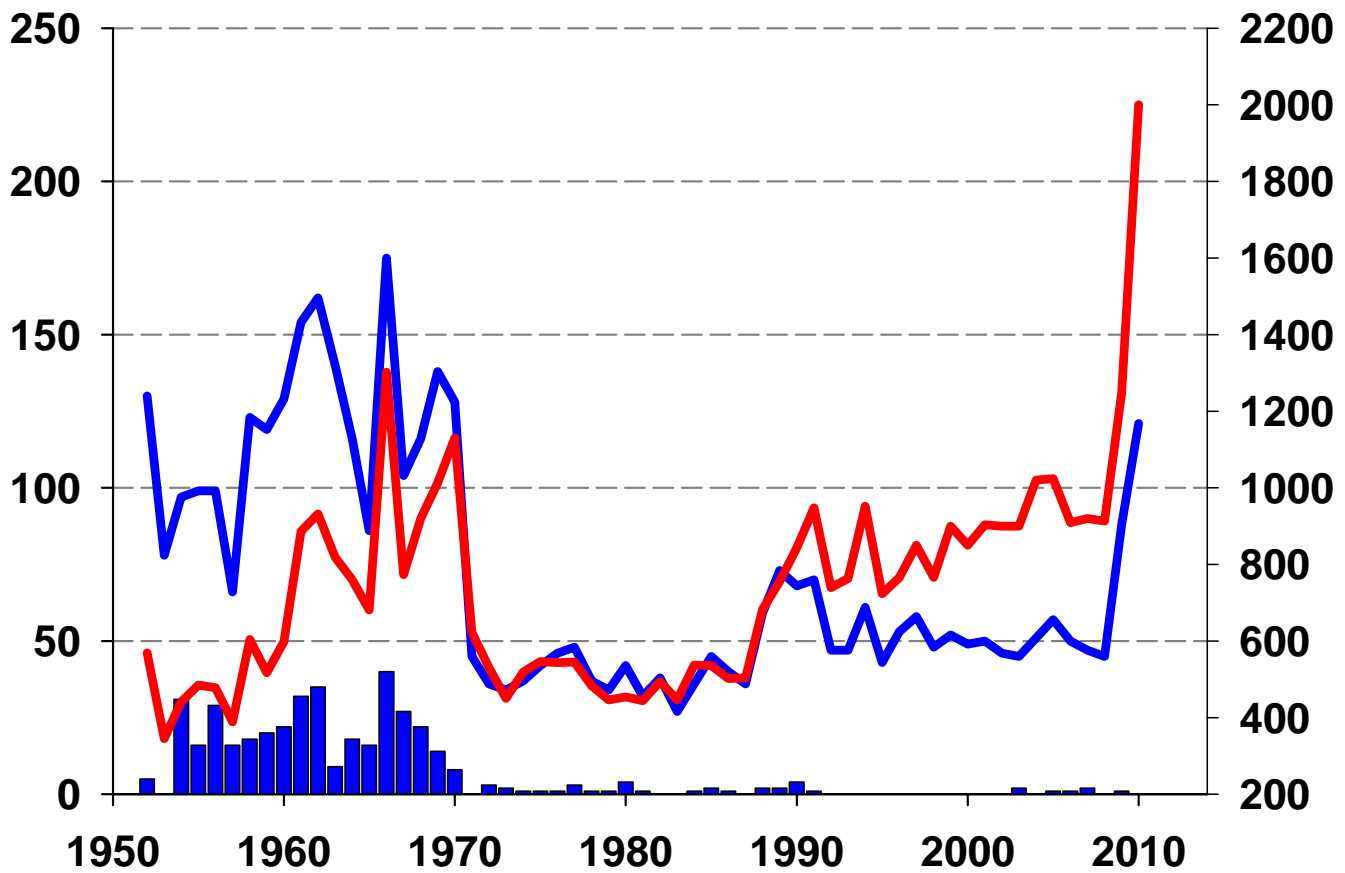
GRFP Funding History

Awardees
proportional
to
applications
in each field





Number of new Fellows in Physics & Astr



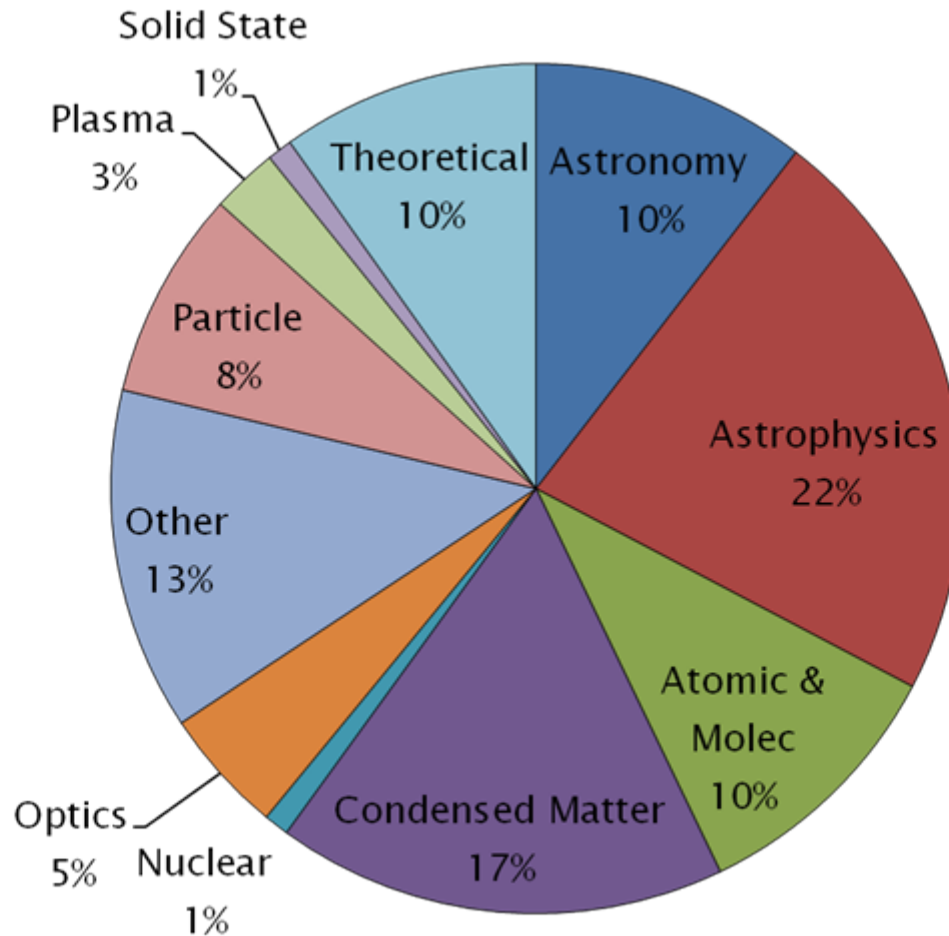
Total new Fellows

Fellowship Award Year

— Physics & Astronomy
— All Fellows



Physics and Astronomy NSF Graduate Fellows





GRFP 2010 and Beyond

- ▶ 2,000 New awards & 2026 Honorable Mentions
- ▶ \$136 million FY 2010 budget
- ▶ 3,600 Fellows enrolled in 200 institutions
 - ~20% Physical sciences & mathematics
 - ~30% Engineering
 - ~30% Life sciences
 - ~20% Social sciences
- ▶ By FY 2013
 - 3,000 New awards





GRFP Success Rate

- ▶ 2008
- ▶ 1,000 Awards
- ▶ 10,000 Applications
- ▶ ~ 10% Success

- ▶ 2010
- ▶ 2,000 Awards
- ▶ 12,000 Applications
- ▶ ~ 17% Success





GRFP General Eligibility

- ▶ U.S. citizens and permanent residents
- ▶ Early-career students
- ▶ Pursuing research-based MS and PhD
- ▶ NSF supported fields
- ▶ Enrolled in accredited institution in US or abroad





Applicant Resources

nsfgrfp.org

- ▶ Tips for applying
- ▶ Frequently asked questions
- ▶ Find experienced GRFP resource
- ▶ Other funding opportunities
- ▶ Panelist registration

