

An Approach to Chemical Free Surface Processing for High Gradient Superconducting RF Cavities

Edward Cruz¹, Ph.D., Linton Floyd¹, Ph.D.,
Frederick Mako¹, Ph.D.

and

Larry Phillips², Ph.D., William Clemens²

October 1-2 2012

DOE, Office of Nuclear Physics, SBIR/STTR Exchange Meeting

¹FM Technologies, Inc., Chantilly, VA, USA,

²Thomas Jefferson Laboratory, Newport News, VA, USA

FMT Capabilities

- Founded in 1987, FM Technologies, Inc. (FMT) is a technology company with expertise in: charged particle beams, particle accelerators, plasma physics, electron/ion/microwave beam interaction with materials, microwave source development, pulsed power, and integration of these areas
- FMT has several projects approaching the commercial development stage
 - Ceramic/Ceramic & Ceramic/Metal joining for use in high temperature chemical conversion processes
 - Self-Bunching Electron Guns with/without Current Amplification for Accelerators and RF sources
 - Microwave Plasma Torches for various applications

FMT Facilities/Equipment

- Headquartered in Chantilly, VA, FMT has over 10,000 ft² of available laboratory space and 8,300 ft² of available office space
- Offices equipped with advanced multi-core workstations loaded with a variety of sophisticated software codes including:
 - EGUN, ICAP/SPICE, PARMELA, POISSON, SUPERFISH, SolidWorks, FEMM, HFSS, CSIRO, and FlexPDE-3D, FMT proprietary code FMTSEC (a 2 1/2D PIC code with secondary emission), MAGIC3D, CST, and an FMT 3-D relativistic particle pusher
- Laboratory has a full machine shop w/ plasma processing equipment:
 - Small and large (digital) precision lathes with high speed tool post grinder
 - Digital milling machine
 - Grinding and sanding equipment
 - Acetylene, arc and spot welders
 - Cutoff saw
 - Band saw
 - Diamond saws
 - Small (digital) and large precision drill presses
 - Microwave assisted chemical vapor deposition system
 - RF and DC gun sputtering system
 - 2200K brazing/joining furnace

FMT Facilities/Equipment

- Experimental hardware owned by FMT includes:
 - Pulsed Power Electron Beam and RF sources
 - Electron Beam System (1MV x 40kA x 0.1 μ s)
 - L-band (0.5 and 5 MW pulsed)
 - S-band (0.8, 1, 2.6 and 13 MW pulsed; 1 and 6 kW CW)
 - X-band (two 0.25 MW pulsed)
 - Broadband Amplifiers (50-2500 MHz, 50-100W CW)
 - MEIJI optical microscope w/ video out (400x, 2.5 μ m resolution)
 - Fast oscilloscopes
 - Ten 100-400MHz digital scopes
 - One 50GHz sampling scope
 - Particle transport magnetic coils
 - Nine vac-ion pumps, 2-400 L/s
 - Six turbo molecular pumps, 60-400 L/s
 - Various roughing pumps
 - 1.5 MJ Capacitor bank
 - High-power RF components
 - Circulators
 - Isolators
 - Phase/amplitude adjusters
 - 0.1-1 MV pulse modulators
 - Chemicals, labware and glassware
 - Power supplies and other test equipment

Project

- SRF Cavity chemical treatment is expensive and complex
- After treatment surfaces still have numerous bubbles and pits
- Quench-producing weld defects and contamination result in significant scatter of Nb SRF cavity performance
- High costs and performance scatter are the major manufacturing problems
- FMT proposes to develop an internal electron beam (IEB) system that will perform electron beam melting over the entire interior surface of Nb SRF cavities
- Result is a surface that is smooth, void/bubble free, and free of imperfections
- This may allow manufacturing of the Nb SRF cavities with a reduction in chemical treatment and an increase in cavity high gradient performance
- FMT will design, build and test the new IEB system and process samples/cavities
- Thomas Jefferson Laboratory will measure RF performance of processed samples/cavities

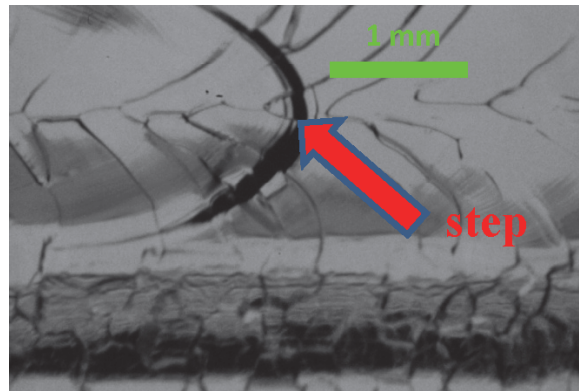
Seven-Cell Nb SRF Cavity at Thomas Jefferson National Accelerator Facility



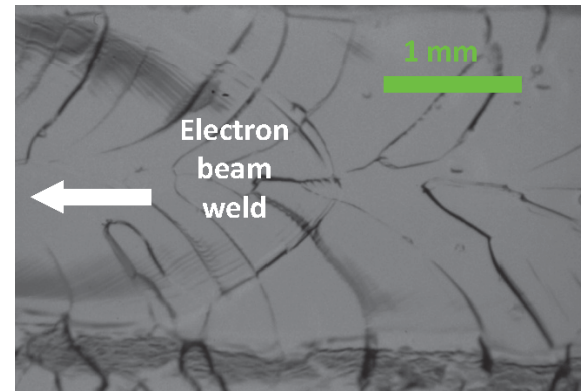
International Linear Collider alone needs 22,000
cavities at \$210k (avg.) /cavity = \$4.62 Billion

Typical SRF Cavity Defects

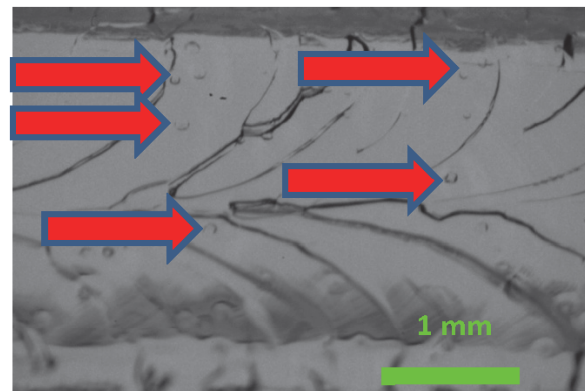
Pictures show typical defects inside Nb SRF cavities around the equator EBW overlaps that remain after chemical treatment:



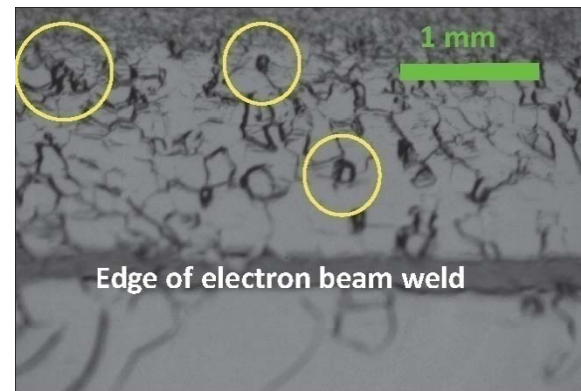
- Irregularity (step) near equator EBW overlap of cell #7 from waveguide



- Two cells have less pronounced features; four cells have no recognizable features



- Many "bubbles" sporadically present inside the weld



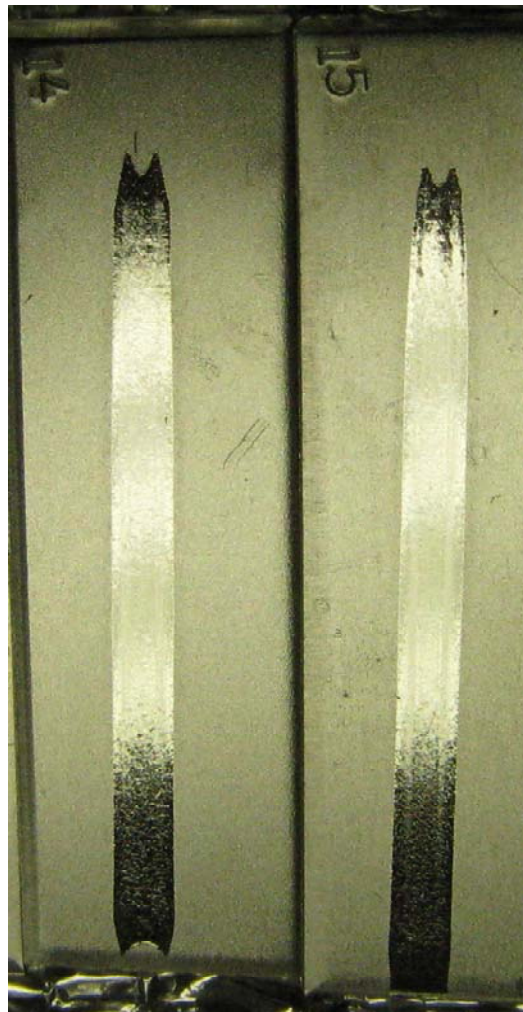
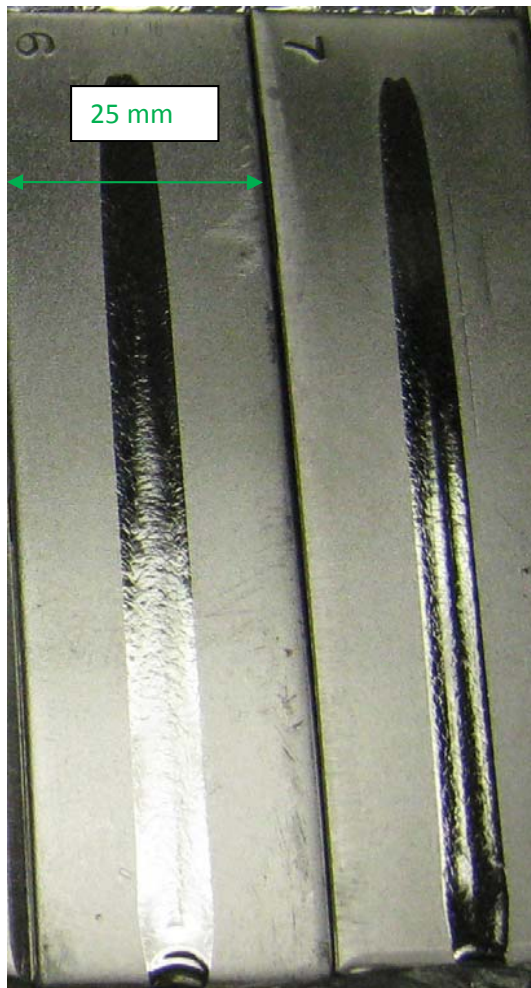
- Many apparent "deep pits" in heat affected zone

Study of Beam Processing for Cavities

Objectives:

- Achieve a smooth surface with minimal defects and impurities to reduce quenching
- Achieve a low strain surface to reduce corrosion and absorption of contaminants
- Final goal is to attain **reproducible** high Q ($>10^{10}$) and high field ($\sim 40\text{MV/m}$) cavities

Electron Beam Melted Nb Samples Using J-lab SCIAKY Welder



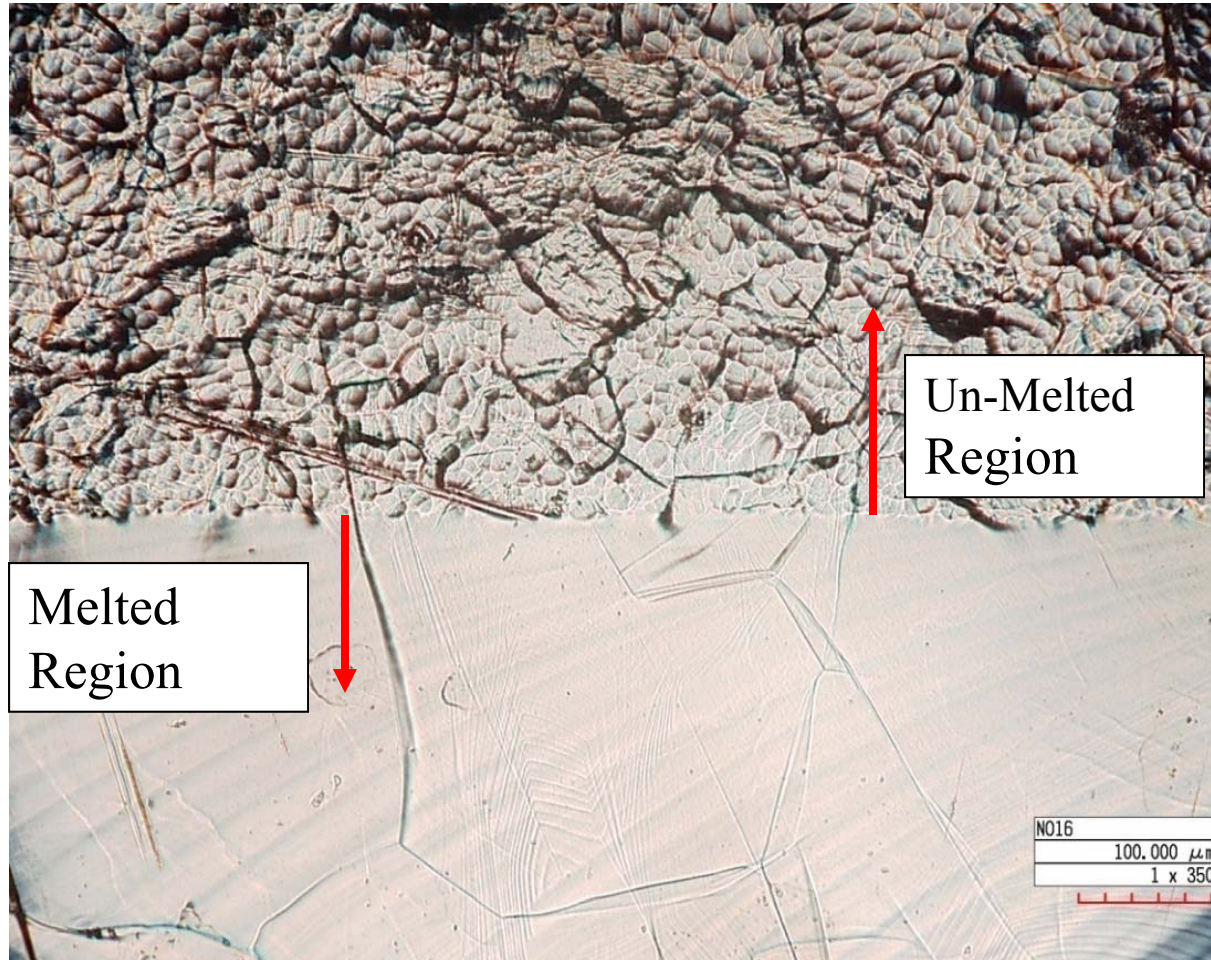
Each single pass melt region is about 6 mm x 74 mm x 0.1-0.2mm deep

A 10 kHz circular to elliptical raster with 0.5-1 mm beam diameter with a particle energy of 50 keV

Beam current and translation rates varied from 20-250mA and 5-20 in/min

28 plates of Nb with dimensions 3 mm thick x 25.4 mm wide x 88.9 mm long

Magnification of Melt Zone



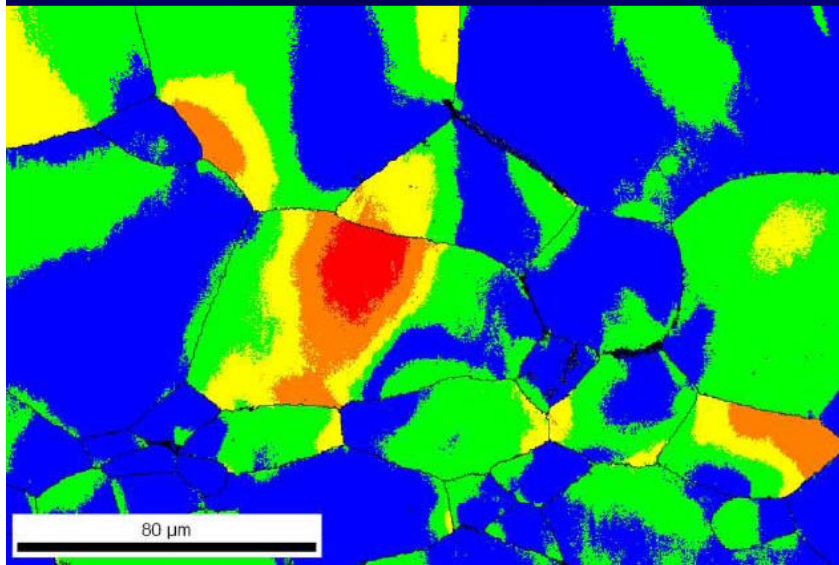
HIROX digital microscope view of sample #6

Bottom half of image shows the smooth melted region that highlights the grain size of about 300-400 μm , while upper half of image shows the rough un-melted small grain region

Grain Reference Orientation Deviation (GROD) Map for Deep Drawn Half Cell

EBSD GROD Map 500 μm deep

Severely deformed, $>15^\circ$ in 50 μm



Color Coded Map Type: Grain Reference Orientation Deviation

	Min	Max	Total Fraction	Partition Fraction
Blue	0	3.87436	0.488	0.488
Green	3.87436	7.74872	0.369	0.369
Yellow	7.74872	11.6231	0.088	0.088
Orange	11.6231	15.4974	0.038	0.038
Red	15.4974	19.3718	0.013	0.013

Boundaries: Rotation Angle

	Min	Max	Fraction	Number	Length
—	15°	180°	0.011	8093	2.43 mm

*For statistics - any point pair with misorientation exceeding 0° is considered a boundary
total number = 743433, total length = 22.30 cm)

Deviation from grain minimum KAM

0.3 μm spatial resolution

Courtesy of Dr. Roy Crooks of Black Laboratories

The section is taken from 3 mm from the equator

The GROD map shows extreme lattice distortion up to an angular rotation of about 20 degrees

No chemical etching has occurred

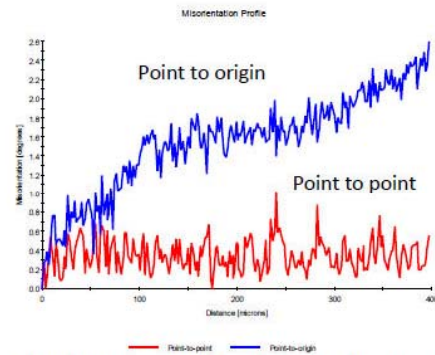
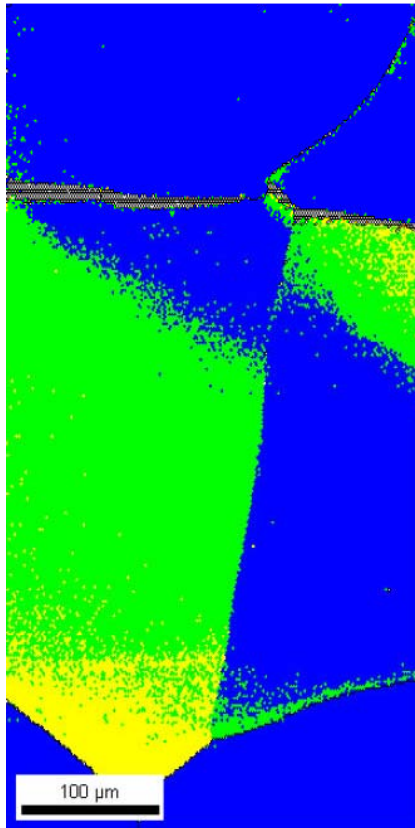
Grain Reference Orientation Deviation (GROD) Map for Nb Flat Sample #7

No. 7

GROD

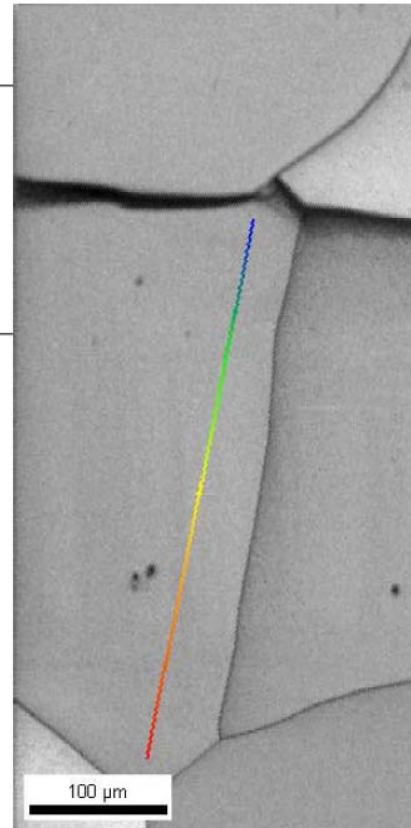
Color Coded Map Type: Grain Reference Orientation Deviation

Min	Max	Total Fraction	Partition Fraction
0	1	0.602	0.602
1	2	0.319	0.319
2	3	0.067	0.067
3	4	0.000	0.000
4	5	0.000	0.000



Misorientation profile within grain, no. 7.

Note lattice curvature in grain on left



Both samples #6 and #7 show GROD in the range of $0 - 3^\circ$ over a distance of 100 – 300 μm .

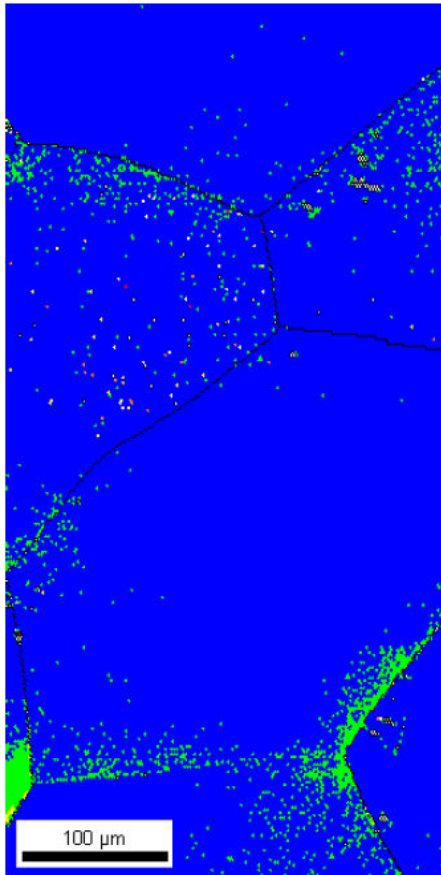
40mA and 10in. /min.

No chemical etching has occurred.

Grain Reference Orientation Deviation (GROD) Map for Nb Flat Sample #15

No. 15

GROD



Color Coded Map Type: Grain Reference Orientation Deviation

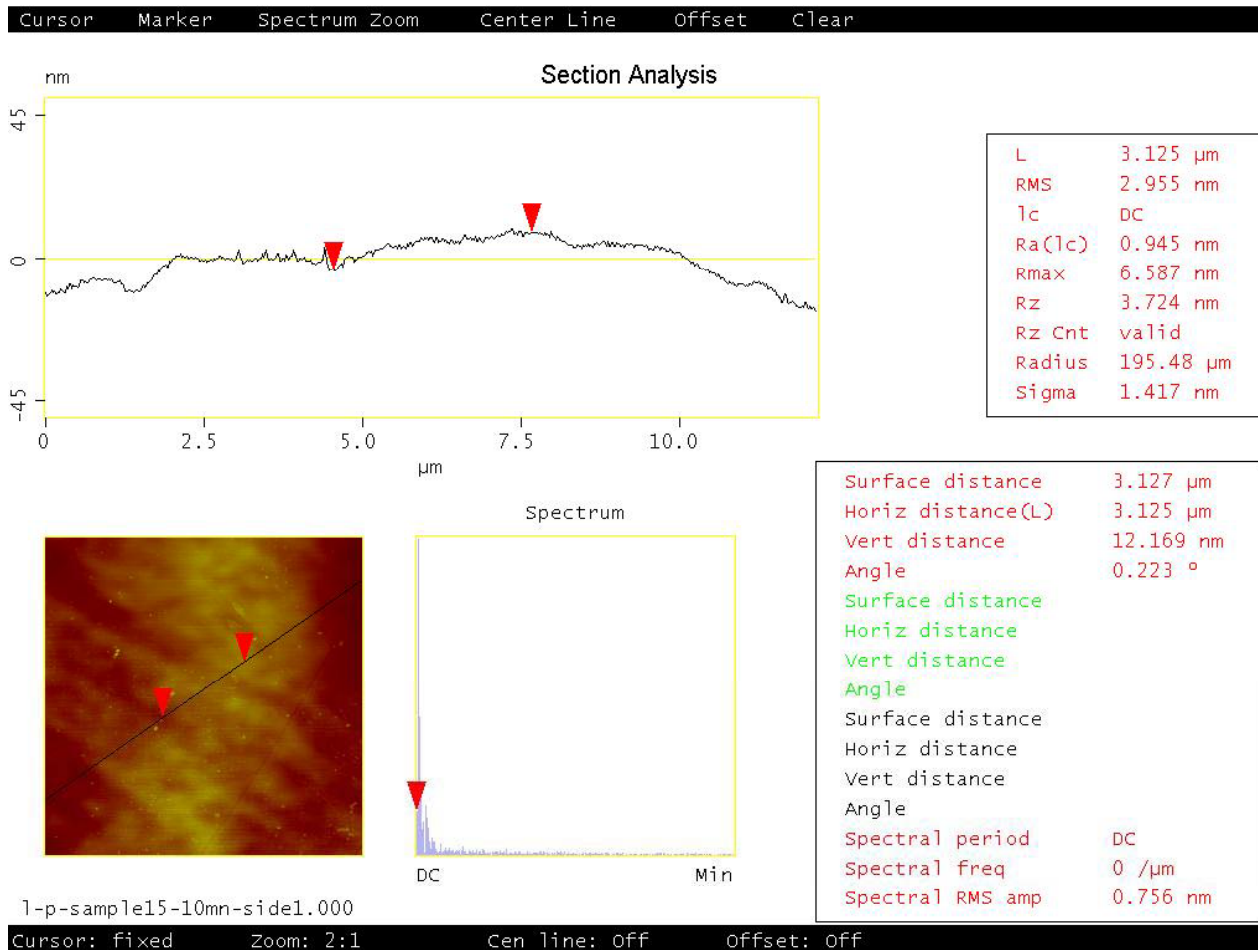
	Min	Max	Total Fraction	Partition Fraction
Blue	0	1	0.960	0.960
Green	1	2	0.036	0.036
Yellow	2	3	0.001	0.001
Orange	3	4	0.000	0.000
Red	4	5	0.000	0.000

Samples #14 and #15 show less lattice distortion compared to samples #6 and #7 as measured by GROD

0 – 2° with the majority of distortion less than 1° over 100 – 300 μm

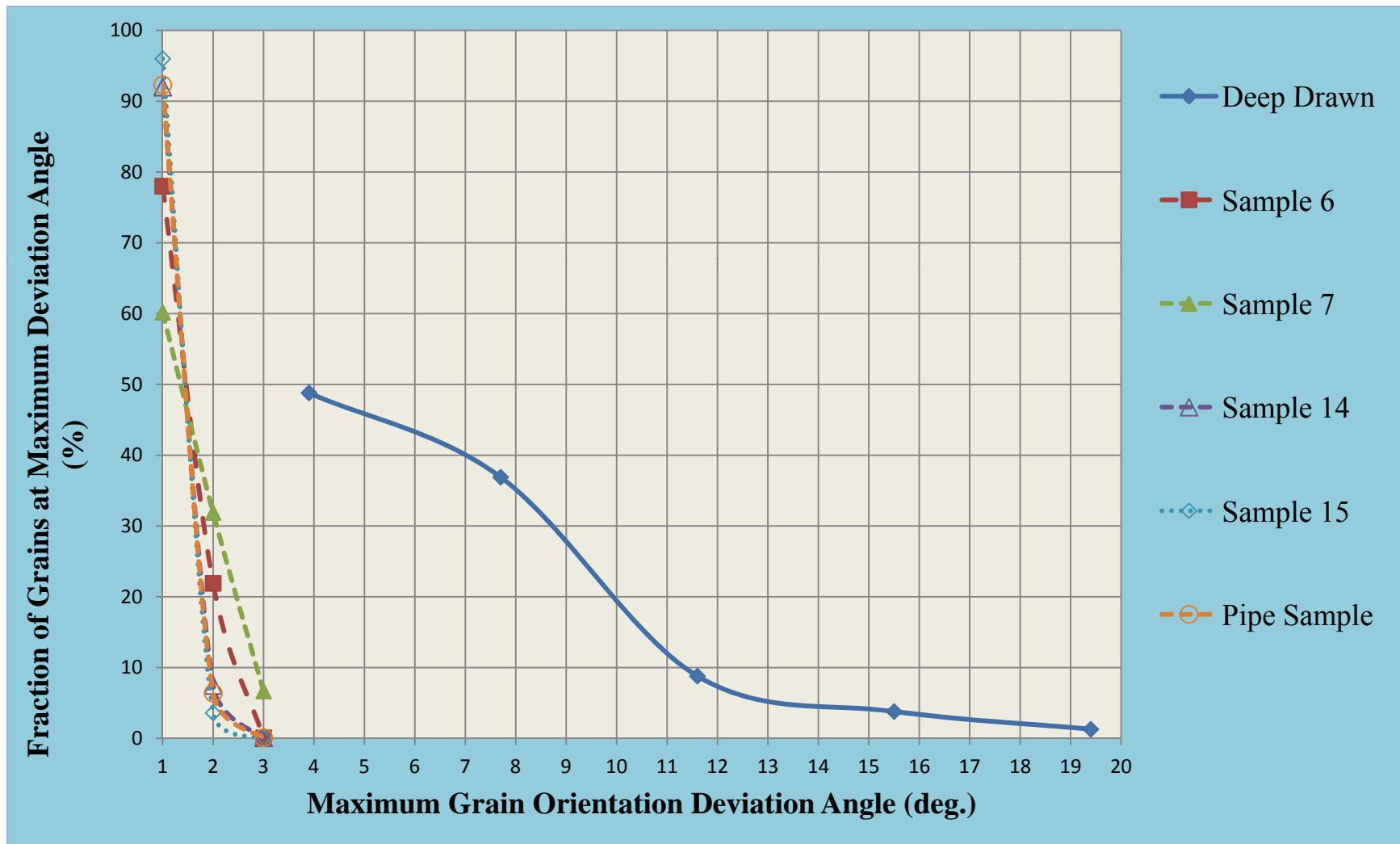
No chemical etching has occurred

AFM of Sample #15

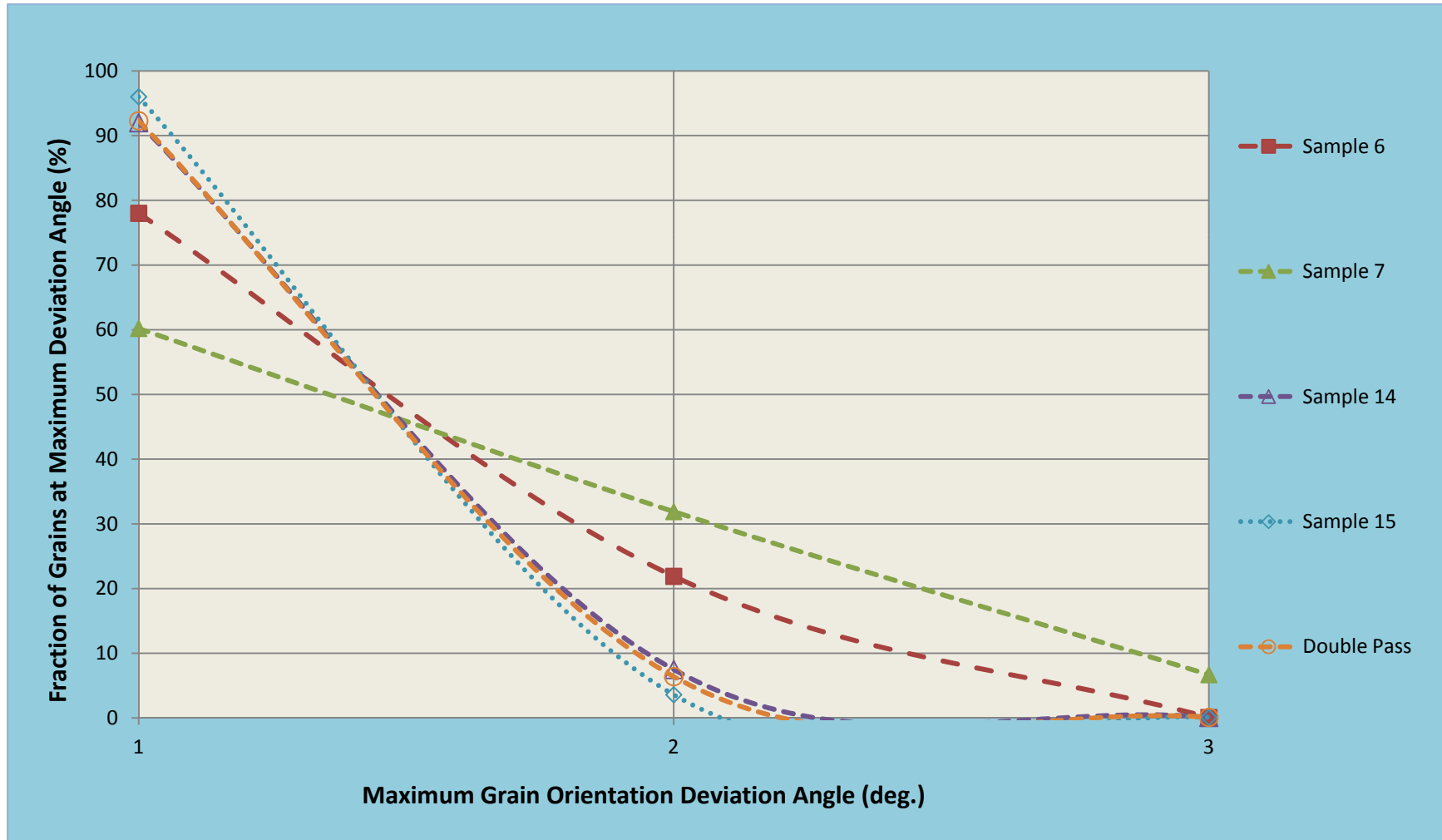


AFM RMS value of less than 3 nm, which is 1/20 of what can be accomplished by electro-polishing and much less than the superconducting layer thickness for Niobium of 42 nm @ 2K

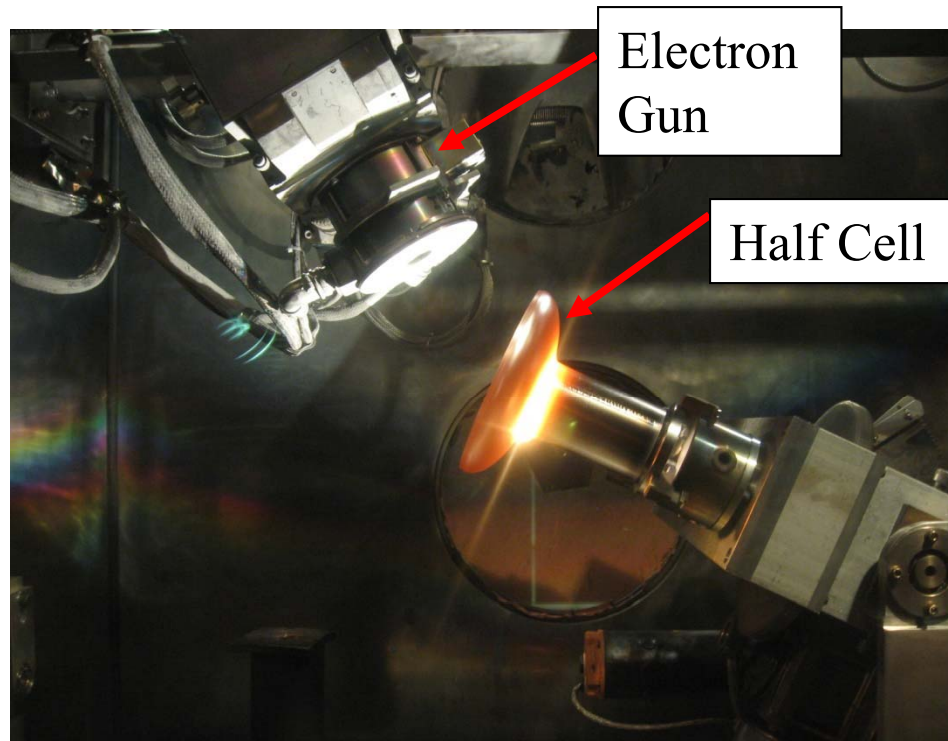
Comparison Of Grain Deviation For Nb: E-Beam Processed and Deep Drawn



Comparison of Grain Deviation for Various E-Beam Processed Nb Samples



Chemical Free Half-Cell Processed in J-lab's SCIAKY E-beam Welder



Finished E-Beam Processed Half-Cell



The beam parameters were: 40 mA, 0.5mm diameter beam, travelling at 18 inches per minute, the melting diameter is about 6 mm with a circular pattern at 10 kHz.

Summary of Beam Results for A Smooth-Low Strain Surface

- Both HIROX & AFM suggest that a smoother surface is attained at lower beam energy dose
- EBSD (GROD) maps suggest a lower strain surface is attained at lower beam energy dose
- Desired beam parameters have been determined

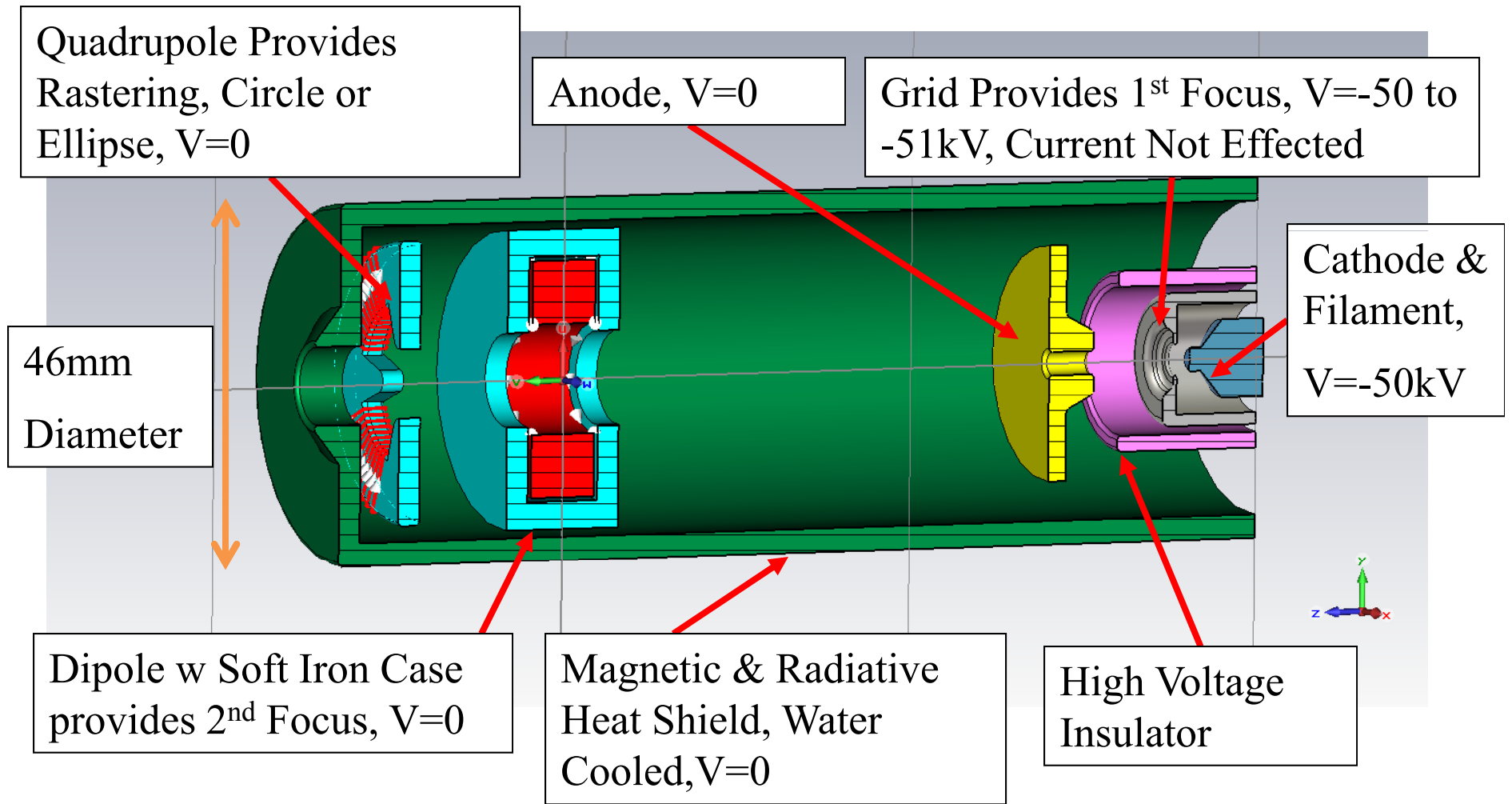
Electron Gun and Beam Transport Design

- Two Strategies: Ballistic Focusing and Magnetized Beam

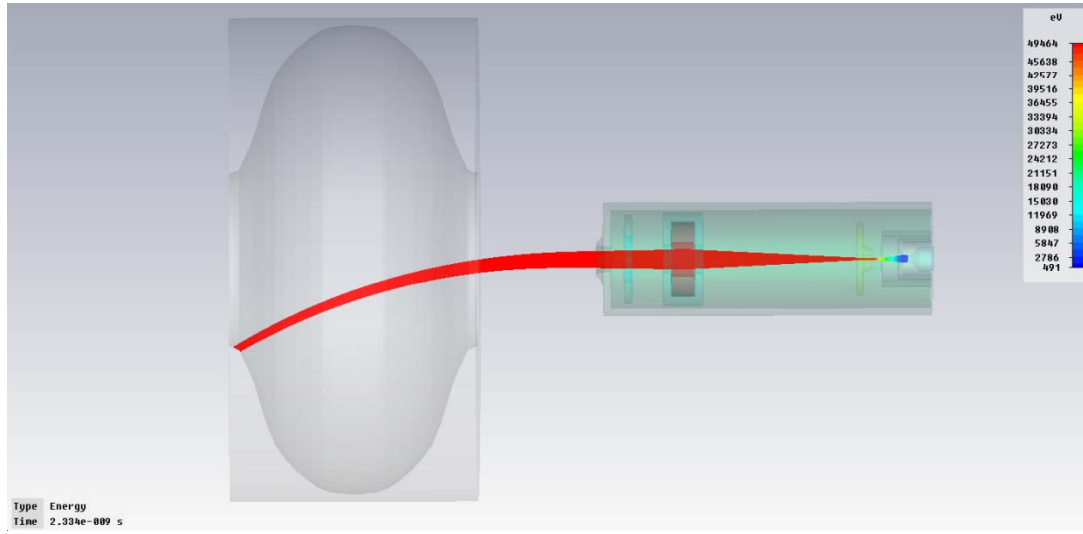
CRITERIA:

- Can process from iris to equator and circumference
- Prevent Nb vapor arcing
- Can tolerate beam induced thermal radiation & filament heat load
- Electron Gun Characteristics: $\sim 50\text{keV}$, beam spot 0.5-1mm, gun diameter < cavity iris (<50mm), long focal length (30-100cm) and current control independent of focus

Ballistic Focusing Gun

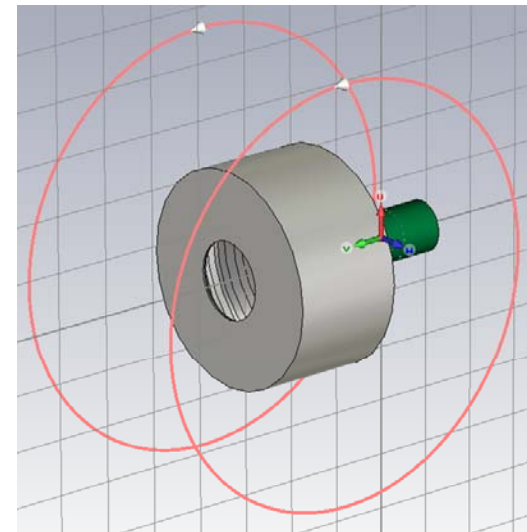
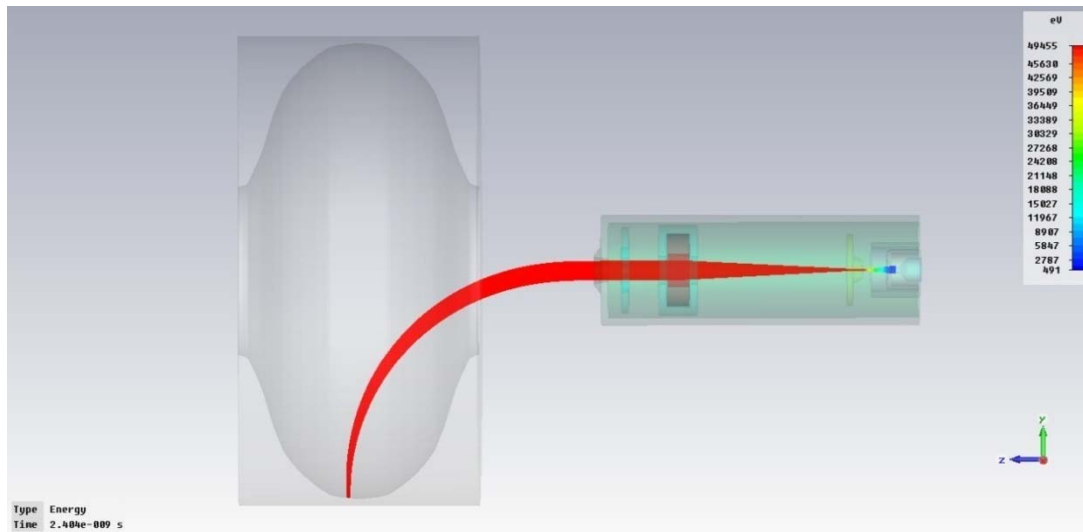


Ballistic Focusing Gun: Electron Beam Trajectory



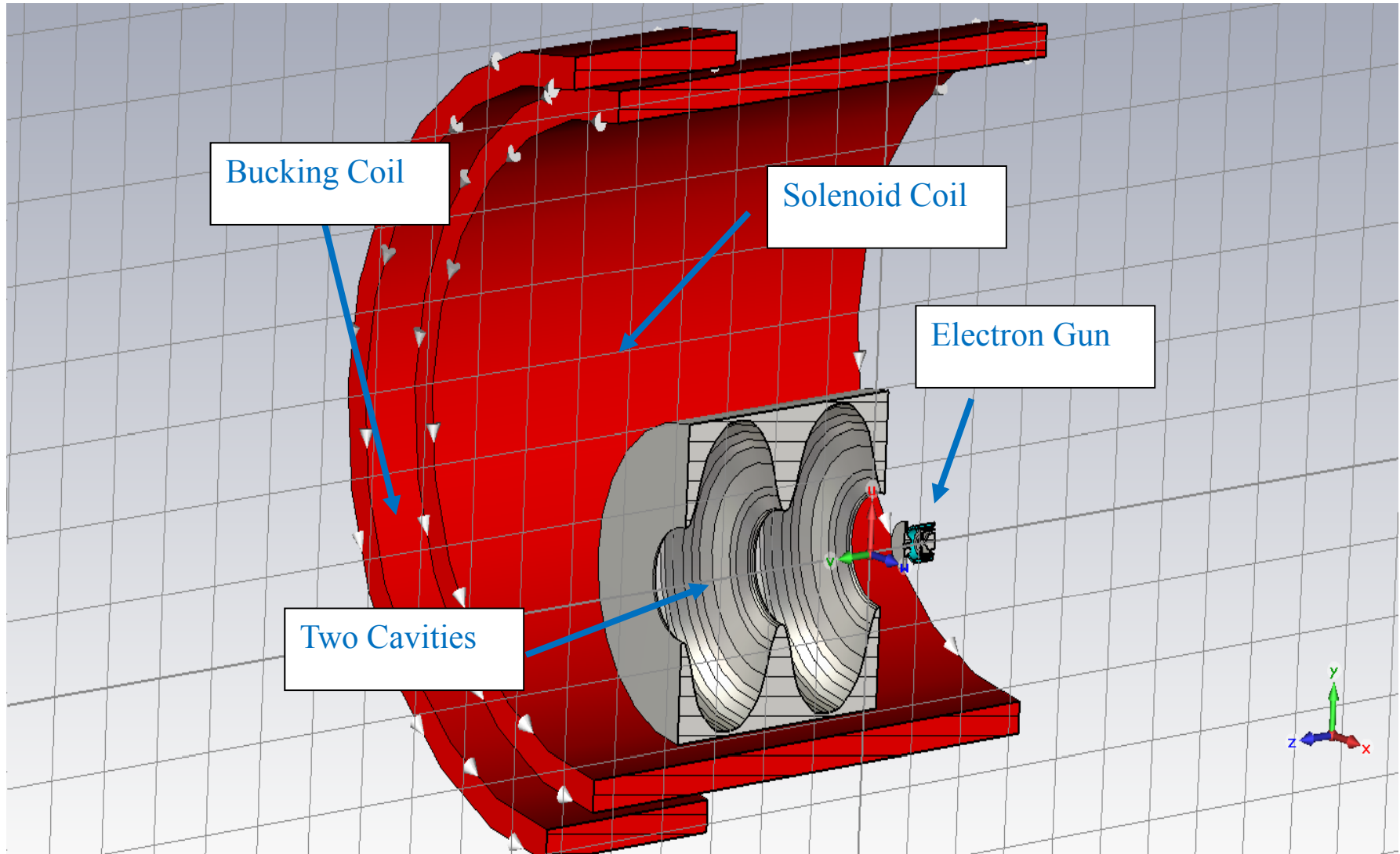
Helmholtz coils provide R-Z beam scanning from iris to equator

Azimuthal scanning provided by rotating either the cavity or Helmholtz coils or field about the Z-Axis

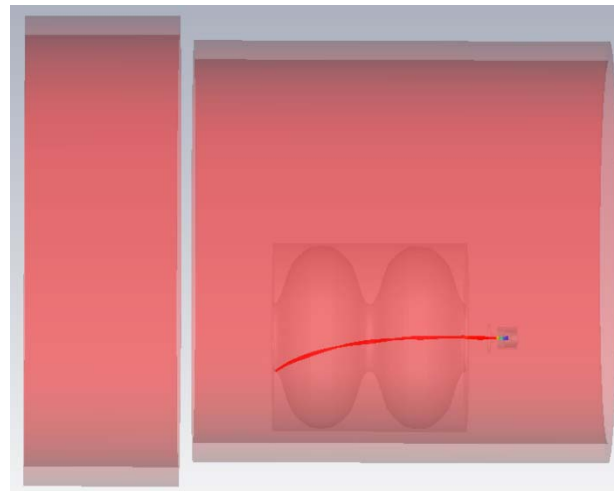
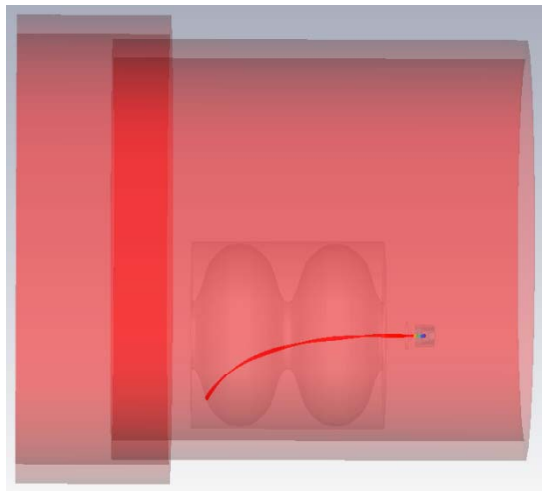
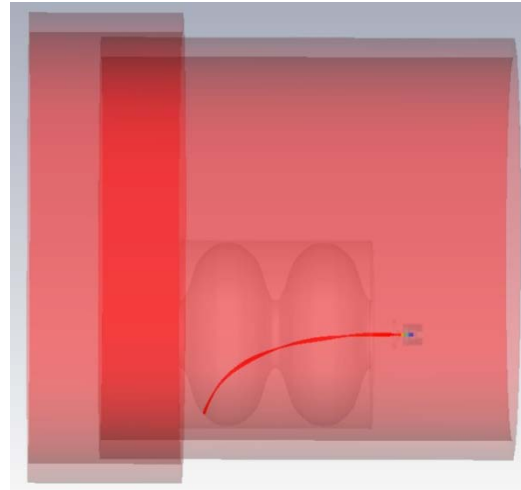
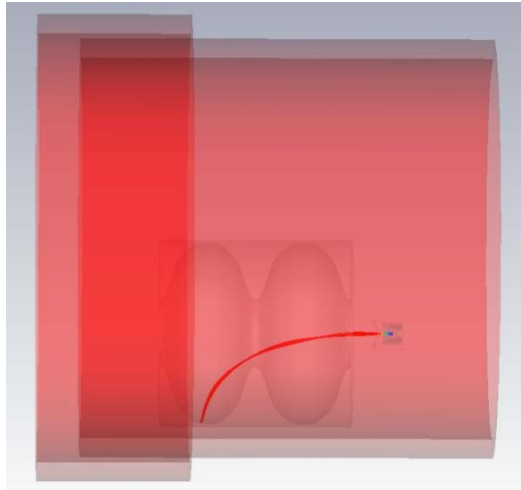


Magnetized E-Beam Gun

Simple Gun Design: Only Needs Cathode, Grid & Anode



Magnetized E-Beam Gun: Electron Beam Trajectory



Bucking coil
position/current
provides R-Z beam
scanning from iris to
equator

Azimuthal scanning
provided by rotating
cavity

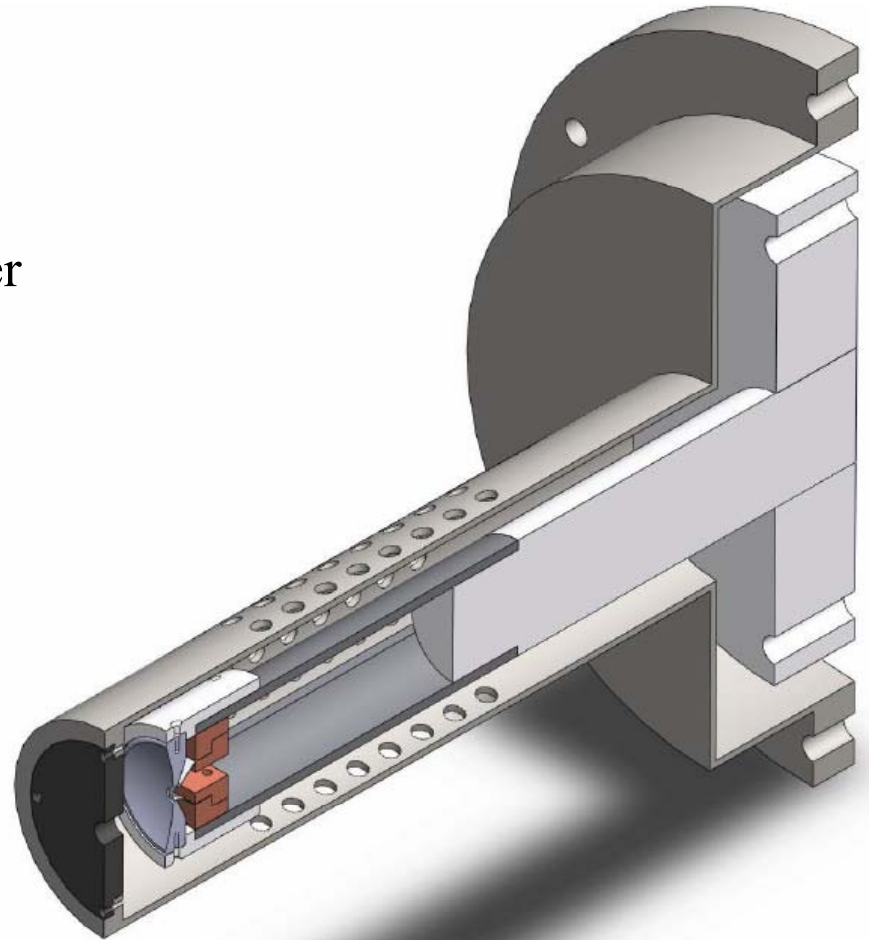
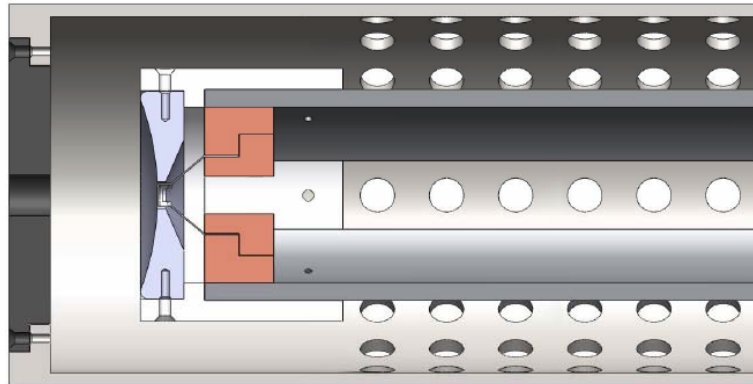
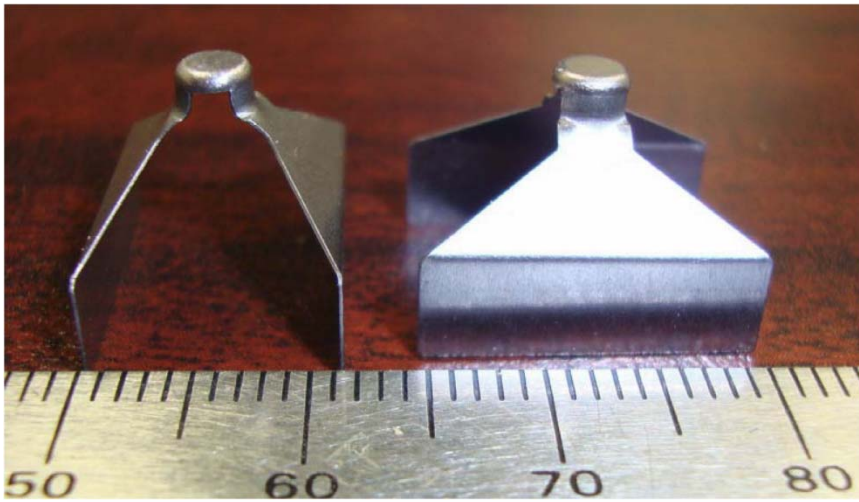
Advantage over
ballistic gun of much
longer focal length,
but more complex
magnetics

Ballistic vs. Magnetized Beam

- Ballistic
 - Compact
 - Shorter focal length
 - Slow/uniform melting
 - Complex
 - In-cell processing issues
- Magnetized
 - Simple
 - Long focal length
 - Higher beam power
 - Cannot point focus
 - Requires very large magnets

Prototype Gun Design

- SCIAKY tantalum filament
- 67A @ 1.4V
- Passively cooled
- Improved filament design to come later



Stainless Steel Test Chamber

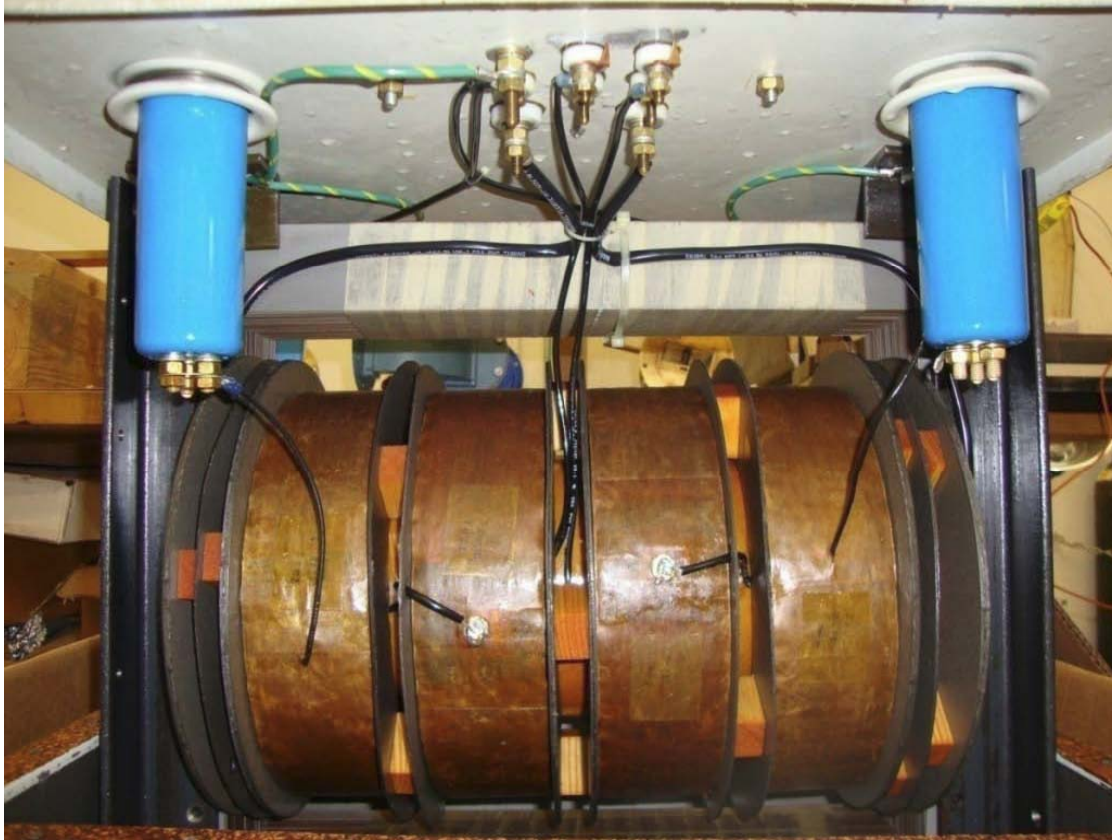


Chamber reaches 10^{-8} Torr in
~2hr with turbo and cryo-pumps

Chamber ready for gun
installation and high voltage

Chamber suitable for time
dependent magnetic fields:
magnetic diffusion time ~13ms

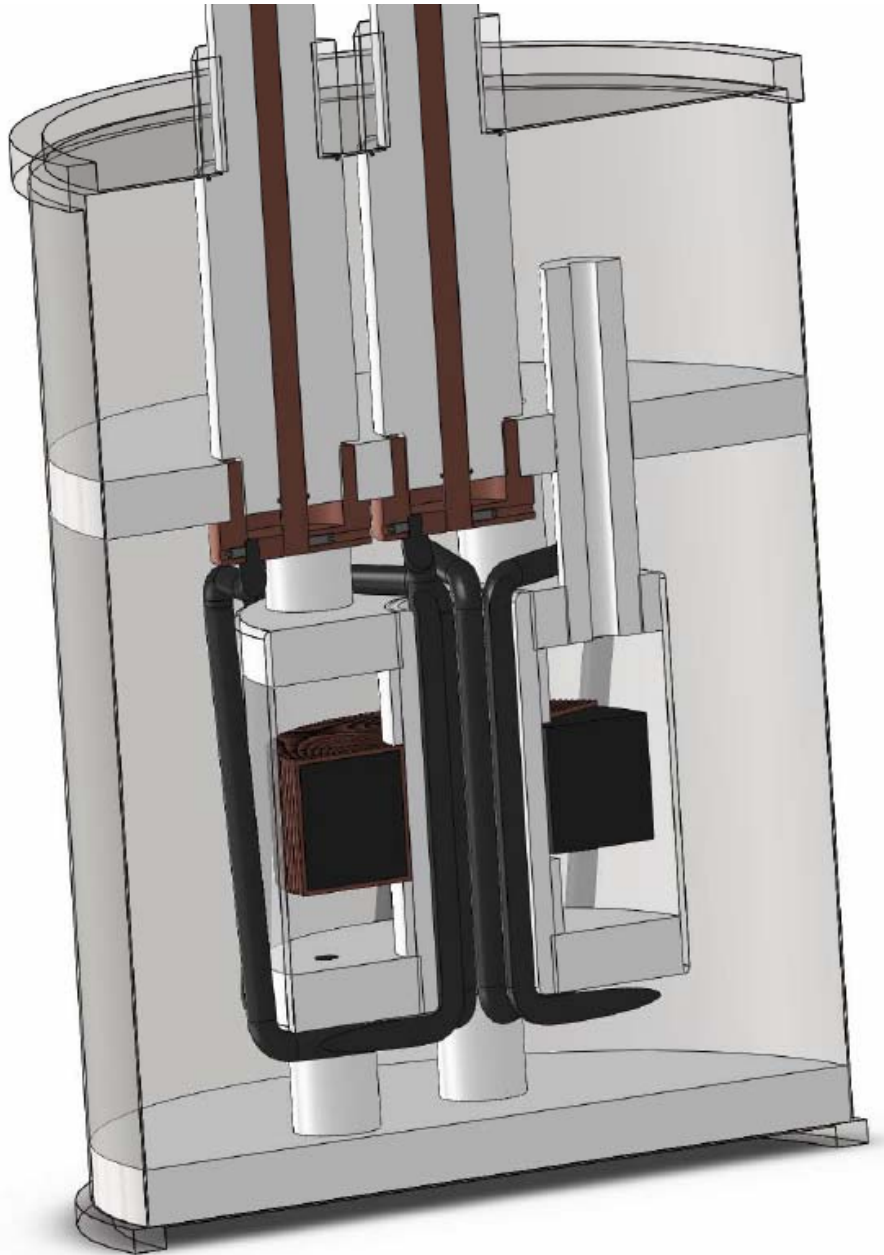
High Voltage Transformer



- “E” core transformer
- 15kVA, 220V RMS input
- Four secondary windings
- 2+2 configuration gives 230mA @ 65kV



Filament Transformer



- FMT design
- 2.3kVA, 115V RMS input
- 20A primary
- Capable of 430A @ 5.35V w/ 150kV isolation

Summary and Status

- Beam parameters have been determined that give a smooth low strain surface using a conventional rastered beam
- Two gun designs examined (ballistic & magnetized beams) to meet the requirements with and without rastering for both internal and external gun operation
- Stainless steel vacuum chamber, suitable for time dependent magnetic fields, ready for high voltage and e-gun
- High voltage power supply and filament transformer ready for e-gun
- Prototype gun designed and ready for fabrication
- Next step will be to surface melt Nb flat strips with new e-gun